



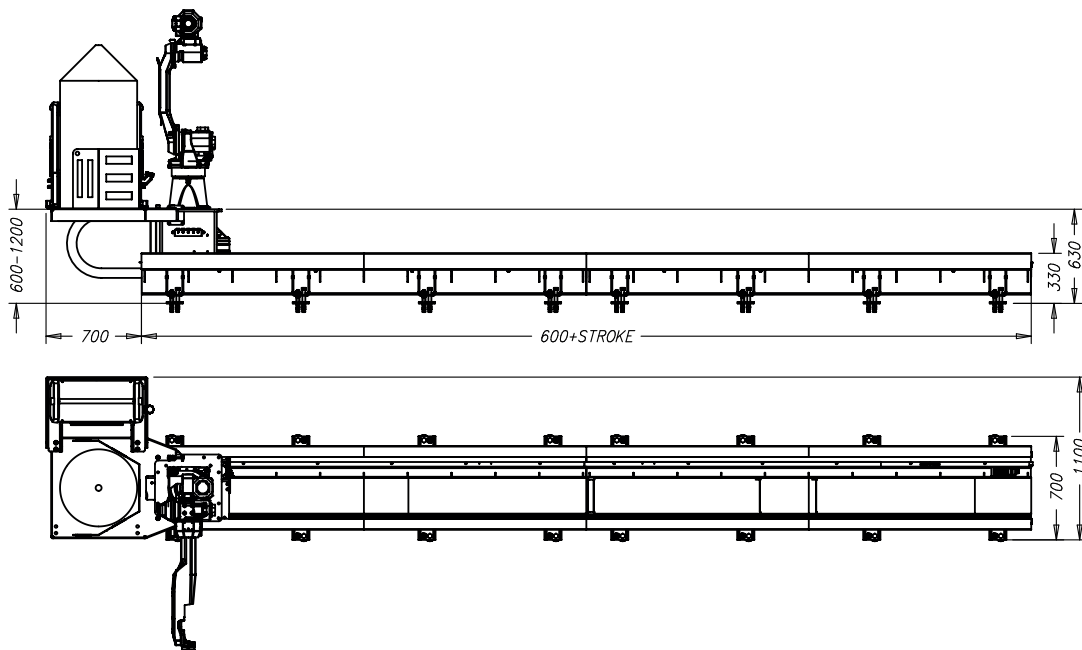
### Specifications

The STN family's smallest member, capable to carry up to 1000kg useful payload. It's body structure is a unique, completely welded steel structure, ensures the low weight and rigidity, meanwhile providing a cost-efficient solution even at longer travel length.

### Available options:

- Double carriage,
- Automatic lubrication
- Ina, Bosch Rexroth, Schneeberger, Hiwin, Thk brand guidance system.
- Extended carriage for carrying welding power source and wire barrel
- Closed or open cable chain
- Cable chain mounting position (standard is middle): left/right

Technical Data		Only Robot (Including Tool & Workpiece)	With Additional Static Load (Including Robot & Additional Equipment)
Max. Payload	(per carriage) kg	400	1.000
Max. Speed	m/min	192	162
Max Acceleration	m/s <sup>2</sup>	3	3
Available stroke	travel length	From 2 m, in 1 m steps	
Total length		Stroke + 600 mm	Stroke + 600 mm
Robot Payload	kg	3-20	
Max. Robot Weight*	kg	400	
*Includes tool, workpiece, options			
Mounting position		Floor, Wall**, Ceiling, Elevated***	Floor, Wall**, Ceiling, Elevated***
**In case of wall mounting, maximum payload reduces to half			
***Ask for detailed information about it			
Repeatability	mm	± 0,01	± 0,01
Life	million meter	10	10



Technical data is subject to change without prior notice.